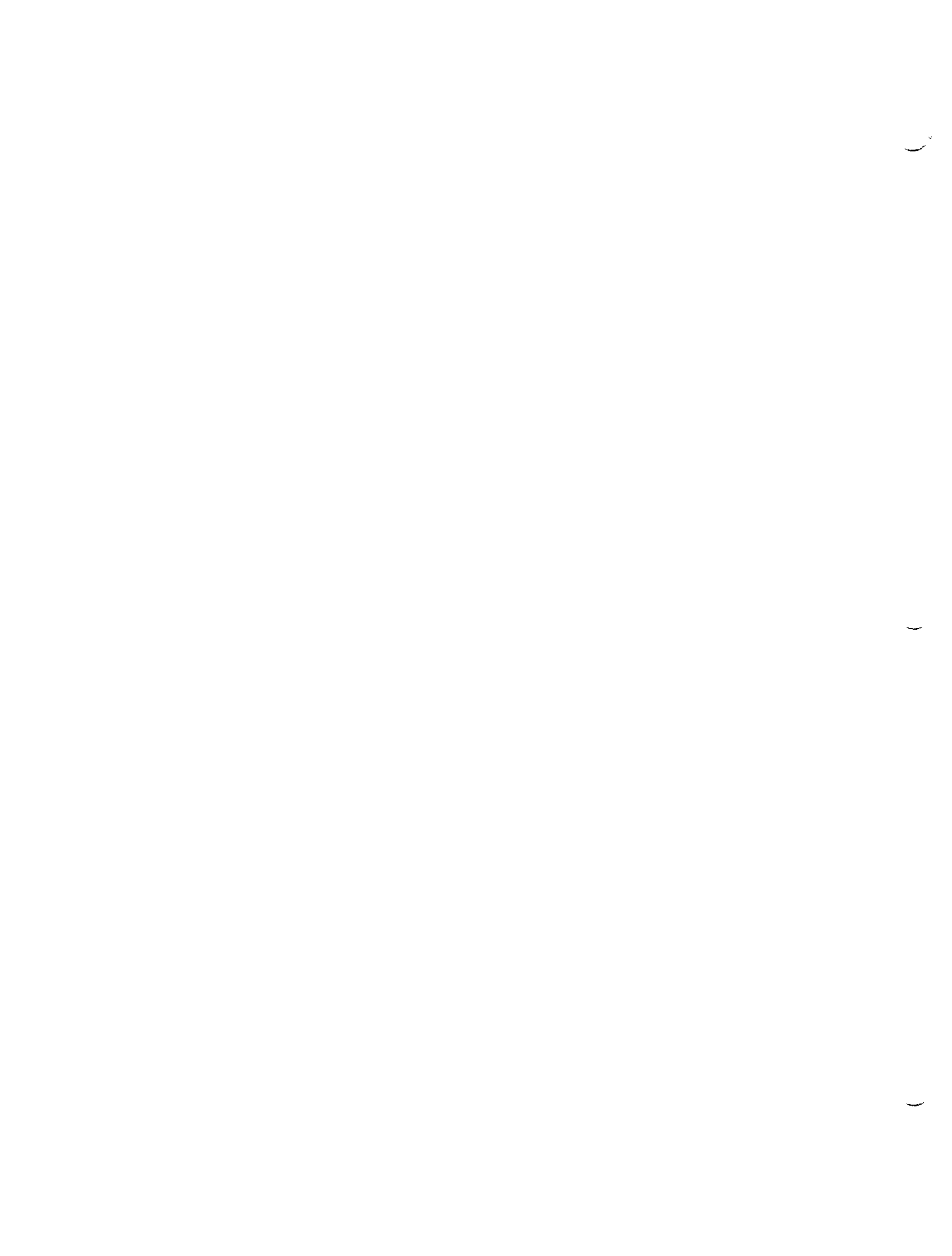


E. Andrew Wilde, Jr., Editor

**The U.S.S. *Fiske* (DE-143) in World War II:
Documents and Photographs**

**Needham, Massachusetts
Privately published by the editor
First Edition 2001**

This publication is printed on acid-free paper.



The USS Fiske (DE-143) In World War II

List of Pages

<u>Sheets</u>	<u>Sides</u>	
1	1	List of Pages
1	2	Glossary
1	1	Quote - President John F. Kennedy, August 1, 1963
1	1	Biography, Rear Admiral Bradley Allen Fiske (1854-1942)
1	1	<u>Photo</u> - On the ways, Orange, Texas, 3/14/43
1	1	<u>Photo</u> - Sponsor's party at launching, 3/14/43
1	1	<u>Photo</u> - Launching, Orange, Texas, 3/14/43
1	1	<u>Photo</u> - Commissioning ceremony, fantail, 8/25/43
1	1	History
1	1	<u>Photo</u> - Port beam, u/way, New York Harbor, 10/20/43
1	1	<u>Photo</u> - Twin 40-mm Bofors mount
1	1	<u>Photo</u> - 20-mm Oerlikon mount
1	1	<u>Photo</u> - Fantail 20-mm's, N.Y. Navy Yard, 3/29/44
1	1	<u>Photo</u> - Bridge from foc'sle, 3/29/44
1	1	Newspaper article, sinking, <u>New York Times</u> , 8/13/44
1	1	Map, North Atlantic, location of sinking
1	1	<u>Photo</u> - Ship torpedoed, crew abandoning ship, 8/2/44
1	1	<u>Photo</u> - After breaking in two, 8/2/44
10	10	Action report, 8/8/44, loss of ship on 8/2/44
1	1	<u>Photo</u> - <u>USS Douglas L. Howard</u> (DE-138), port bow
1	1	Deck Log, <u>Douglas L. Howard</u> , 8/2/44
1	1	<u>Photo</u> - <u>Douglas L. Howard</u> , starboard beam, 9/1/44
1	1	<u>Photo</u> - <u>Fiske's</u> stern section, 8/2/44
1	1	<u>Photo</u> - TBF-1 Avenger torpedo bomber
1	1	<u>Photo</u> - <u>USS Wake Island</u> (CVE-65), aerial, 10/44
1	1	War Diary, <u>Wake Island</u> , 8/2/44
1	1	<u>Photo</u> - <u>USS Farquhar</u> (DE-139), rescue ship, port bow
8	8	Action report, 8/18/44, rescue operation on 8/2/44
1	1	List of Officers, 8/2/44
5	5	Muster Roll of the Crew, 8/2/44
1	2	Firsthand account, George W. Brodie, July 1982
1	1	Newspaper article, <u>Philadelphia Inquirer</u> , August 1944
13	13	Oral history transcript, Lt. John A. Comly, USNR
1	1	Quote - Admiral Chester W. Nimitz, September 2, 1945
12	20	<u>Appendix: Survivors' firsthand accounts</u>
1	1	Photograph Credits
<u>1</u>	<u>1</u>	Bibliography
<u>80</u>	<u>90</u>	TOTALS

E. A. Wilde, Jr.
January, 2001



The USS Fiske (DE-143) In World War II

Glossary

Aldis lamp

A portable, hand-held signal lamp.

A.S.A.P. (Anti-Submarine Attack Plotter)

A display showing ownship's and contact's positions, enabling the operator to determine the correct attack course.

bathythermograph, or "BT"

A device which plots water temperatures at various depths in order to determine the effective sonar range.

BDI (Bearing Deviation Indicator)

A feature of the QCS (searchlight-type) sonar which assisted the operator in maintaining contact with a maneuvering target.

bilge keel

Longitudinal fins, located where the sides of a ship meet the bottom, that reduce rolling.

chemical recorder (see "TRR")

CIC (Combat Information Center)

The area equipped to collect and display tactical information. The General Quarters station for the ship's Evaluator, normally the Executive Officer.

Condition Affirm/Able

The material condition providing the greatest watertight integrity. All doors, hatches and fittings marked X, Y and Z must be closed.

conn

Control of a ship's movement. The officer in control has the conn.

degaussing

Reducing a ship's magnetic field electrically to protect it against magnetic mines and torpedoes.

doppler

The change in pitch of the sound reflected back by a sonar contact from the pitch of the sound transmitted caused by the contact's relative motion. A down doppler indicated that the contact was moving away from the attacking ship.

DRT (Dead Reckoning Tracer)

A plotting device used to record the ship's track by continuously integrating course (from the gyro compass) and speed (from the pitometer log).

FXR (Foyer gear)

A noise-making device towed astern to foil acoustic torpedoes.

handy billy

A small portable gasoline-powered water pump.

Hedgehog/7.2" Projector

A spigot mortar which fired 24 antisubmarine contact-fuzed projectiles in a circular pattern about 200 yards ahead of the ship. These projectiles were 7.2" in diameter and each contained 30 lbs. of TNT.

K-gun

Depth charge launching device used to propel a depth charge laterally away from the side of a ship. The range of these projectors was 50-150 yards, depending on the weight of the depth charge and the size of the impulse charge used.

Pillenwarfer

A decoy device released by U-boats to lure attacking surface ships away from their position.

7.2" Projector (see "Hedgehog")

SL radar

S-band surface-search radar with a range of about 13 miles.

sonobuoy

A small, expendable sound receiver-transmitter dropped from an aircraft to detect submarine noises and transmit them back to the plane.

tactical diameter

Perpendicular distance between the path of a ship on the original course and the path of the ship when steadied on a new course after having turned 180 degrees with a constant rudder angle.

T.B.S. (Talk-Between-Ships)

The short-range radiotelephone circuit on the bridge used for tactical communications.

TRR (Tactical Range Recorder)

The plotter used to record a sonar contact's range and to determine the firing time for antisubmarine weapons.

* * * * *

Any man who may be asked what he did to make his life worthwhile can respond with a good deal of pride and satisfaction, "I served in the United States Navy."

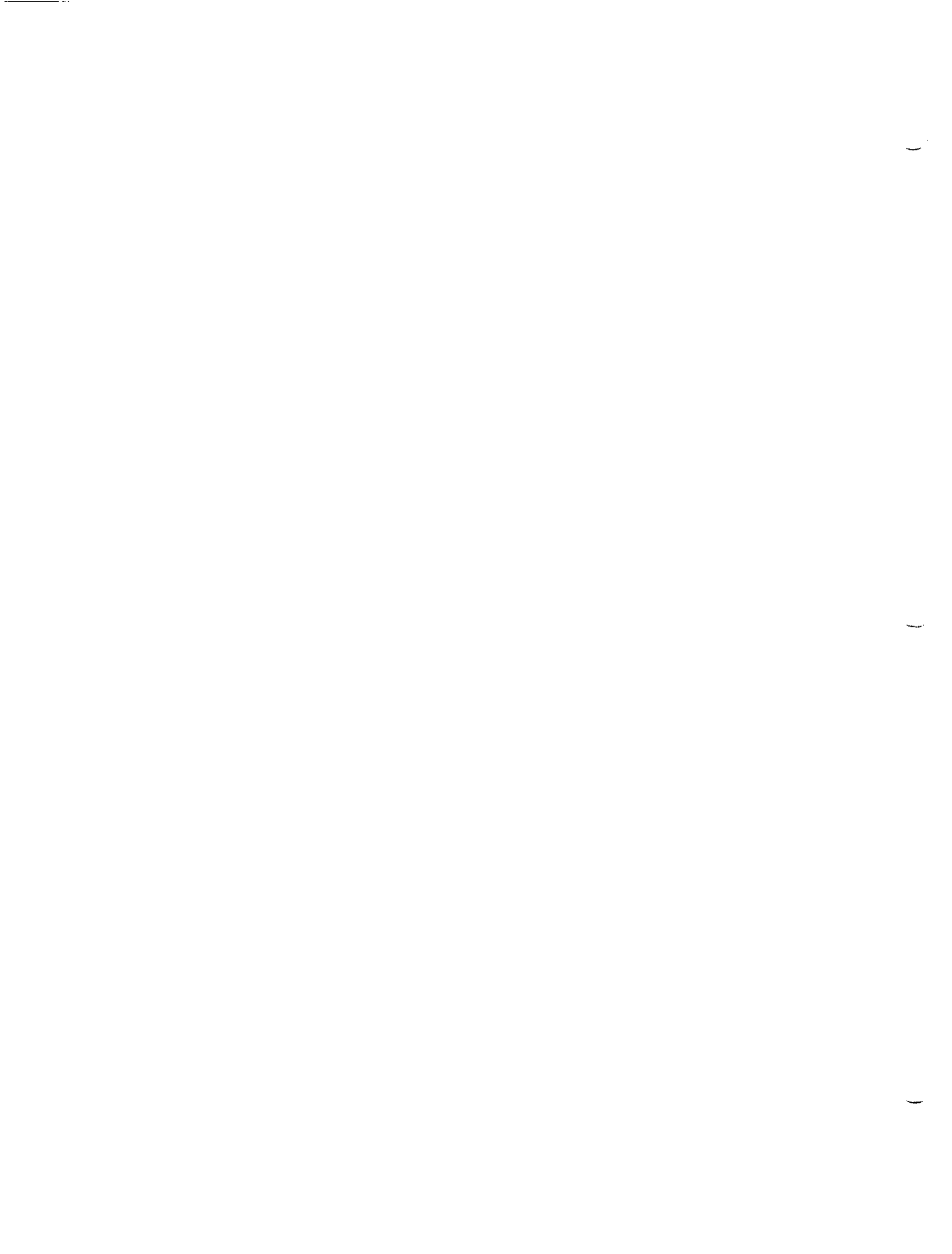
- President John F. Kennedy, addressing the new class of midshipmen at the United States Naval Academy on August 1, 1963.

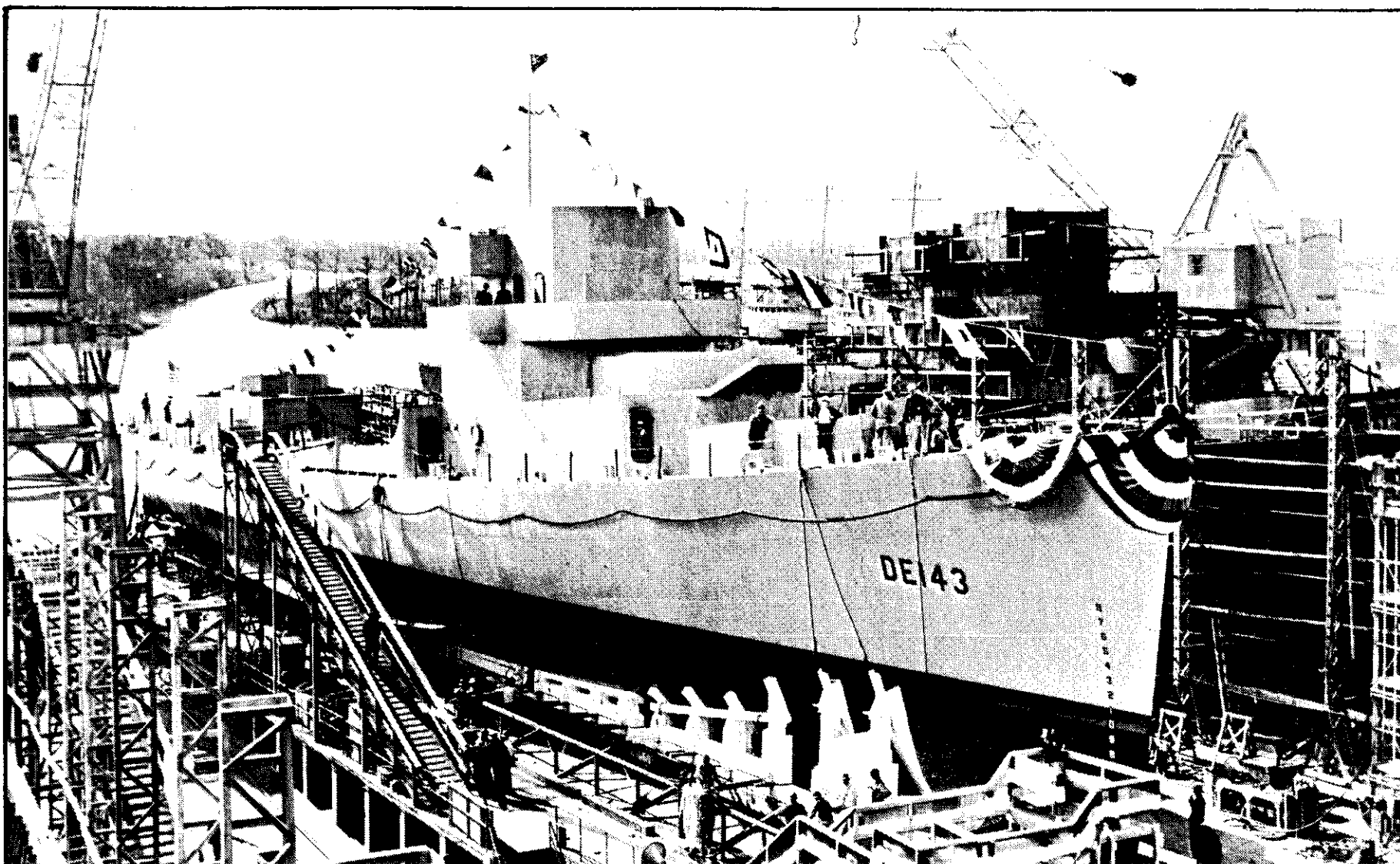


***Fiske* ***

Bradley Allen Fiske, born 13 June 1854 in Lyons, New York, was a member of the Naval Academy class of 1874. In addition to serving with distinction at sea and ashore, Fiske advanced the Navy with electrical and ordnance inventions of great significance. One of the earliest to understand the revolutionary possibilities of naval aviation, he wrote a number of books of important effect in gaining a wider understanding of the modern Navy by the public. Rear Admiral Fiske died in New York City 6 April 1942.

* Dictionary of American Naval Fighting Ships, Vol 2. Washington: U.S. Naval Historical Center, 1963.

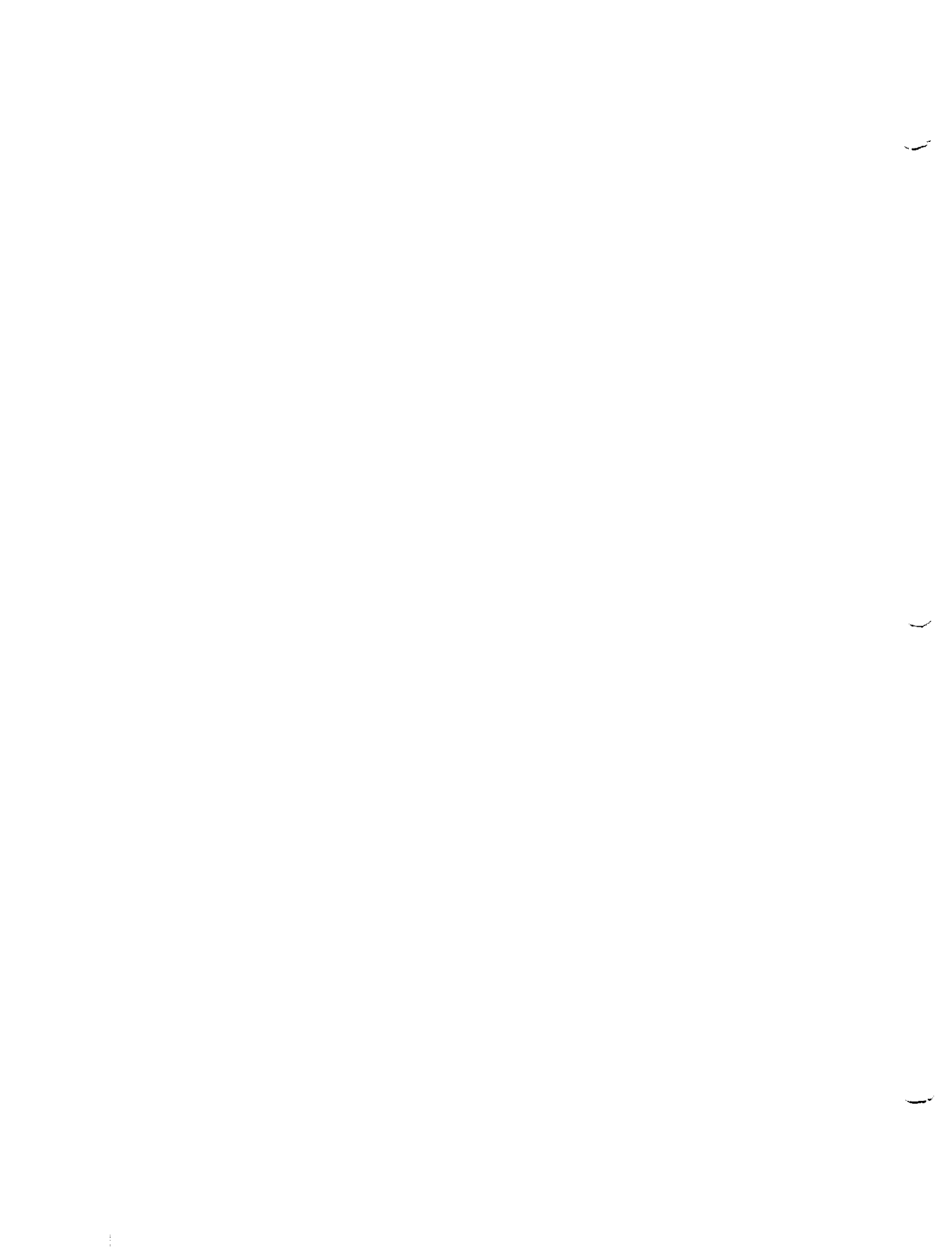




The long hull (FMR-type) Edsall-class destroyer escort USS Fiske (DE-143) on the ways ready for launching at Consolidated Steel's yard in Orange, Texas, on March 14, 1943. Four 1,500 H.P. Fairbanks-Morse diesel engines driving her twin screws through a reverse gear drive gave the ship a rated speed of 21 knots, and twin rudders gave her a tactical diameter of only 300 yards at 20 knots. Other characteristics:

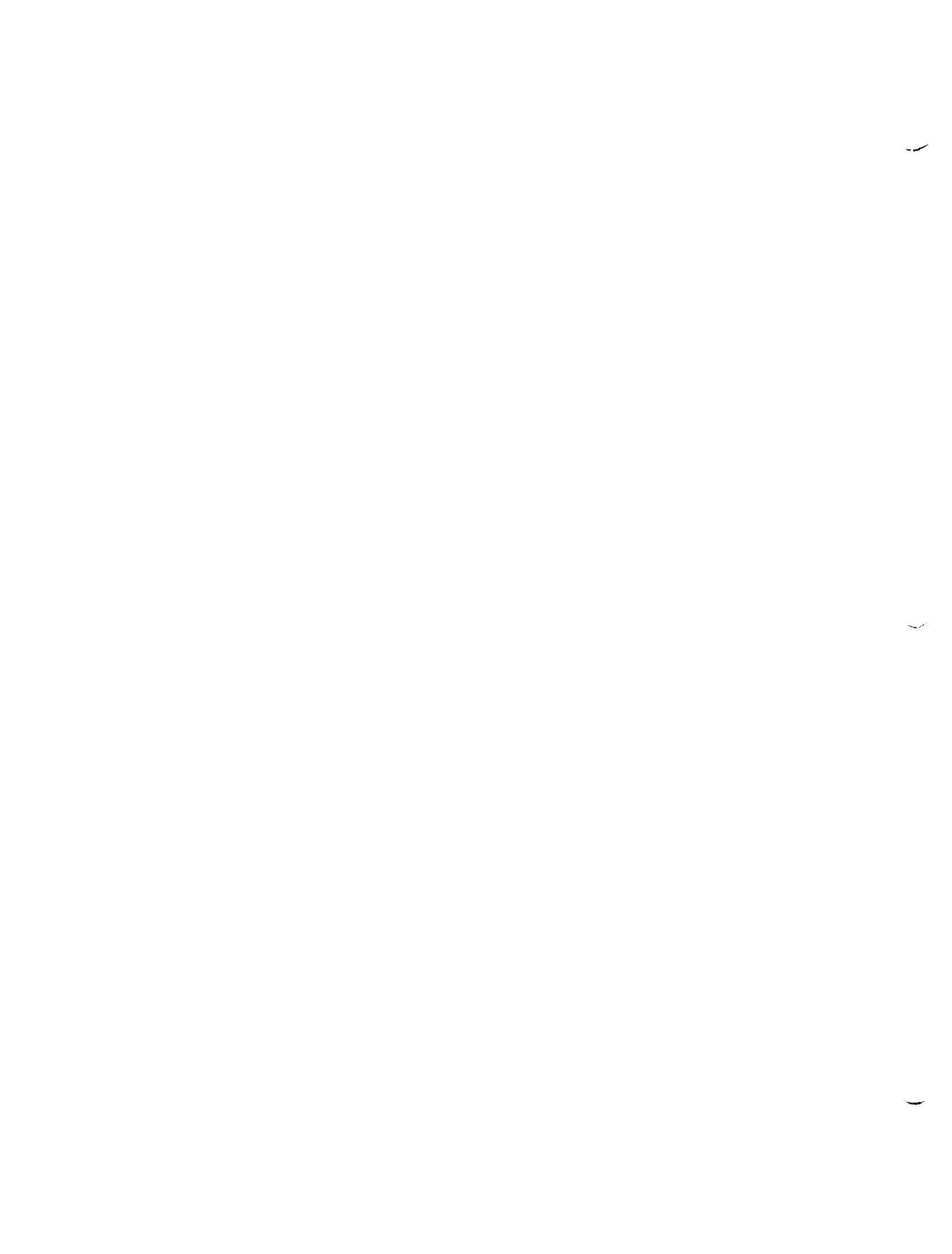
Length overall:	306'0"	Displacement (standard):	1,200 tons
Beam:	36'10"	Shaft Horsepower:	6,000
Draft:	11 ft.	Range (at 12 knots):	10,800 miles

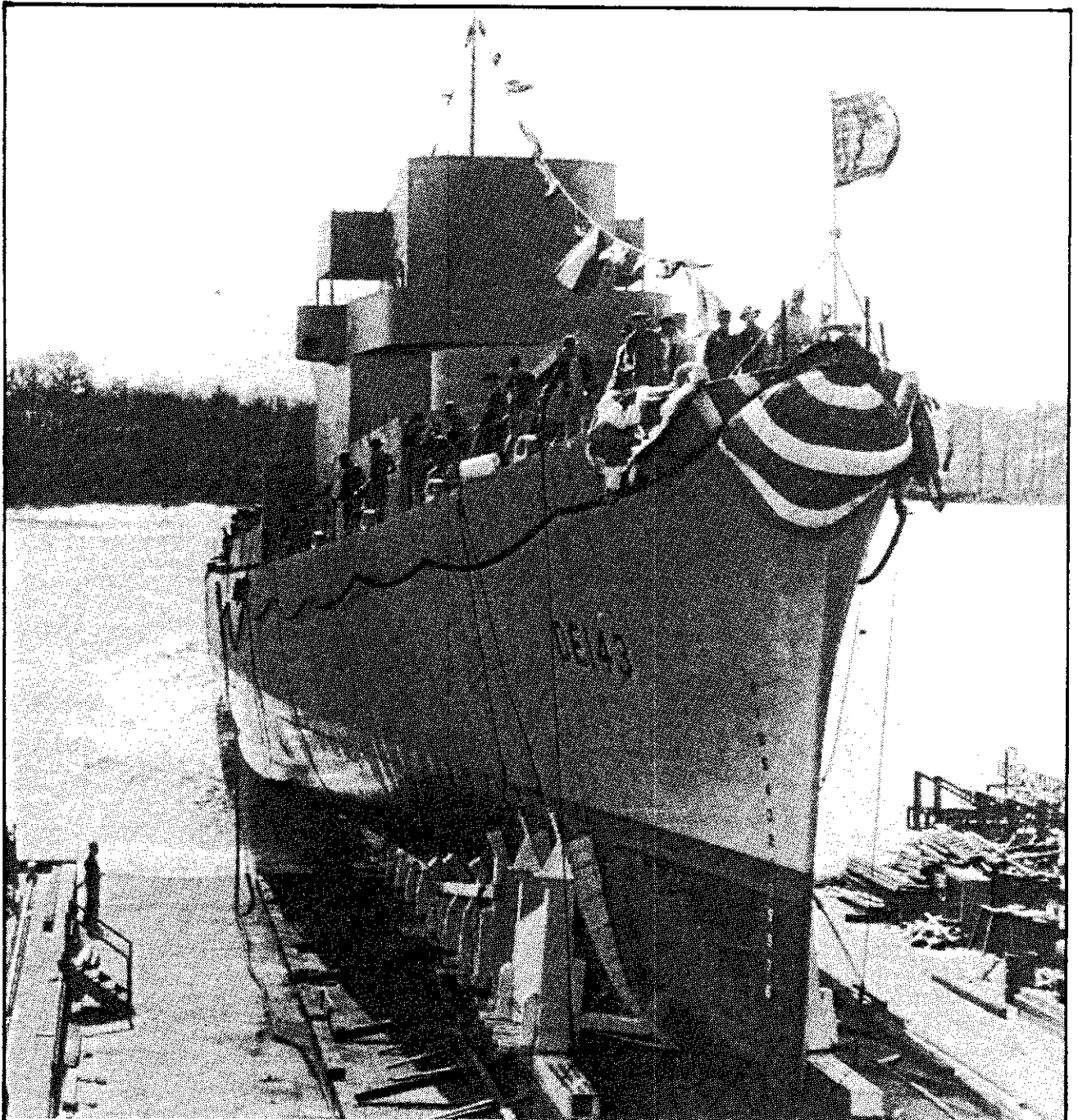
(Official U.S. Navy Photograph.)





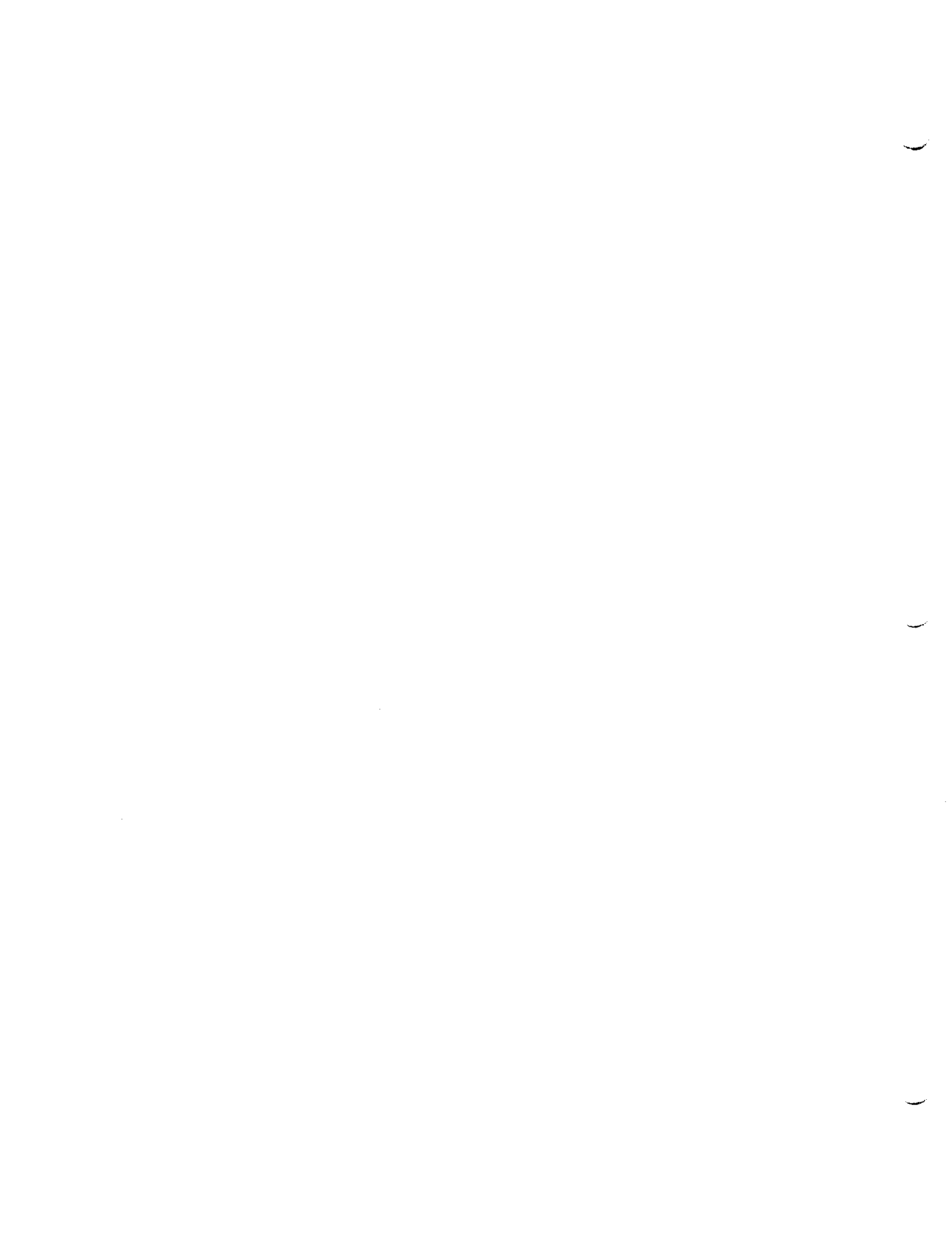
The Fiske's sponsor, Mrs. H. G. Chalkley (with flowers), and her party prior to the launching at Consolidated Steel's yard in Orange, Texas, on March 14, 1943. During World War II this yard completed 93 destroyer escorts, including 47 Edsall-class vessels. (Official U.S. Navy Photograph.)

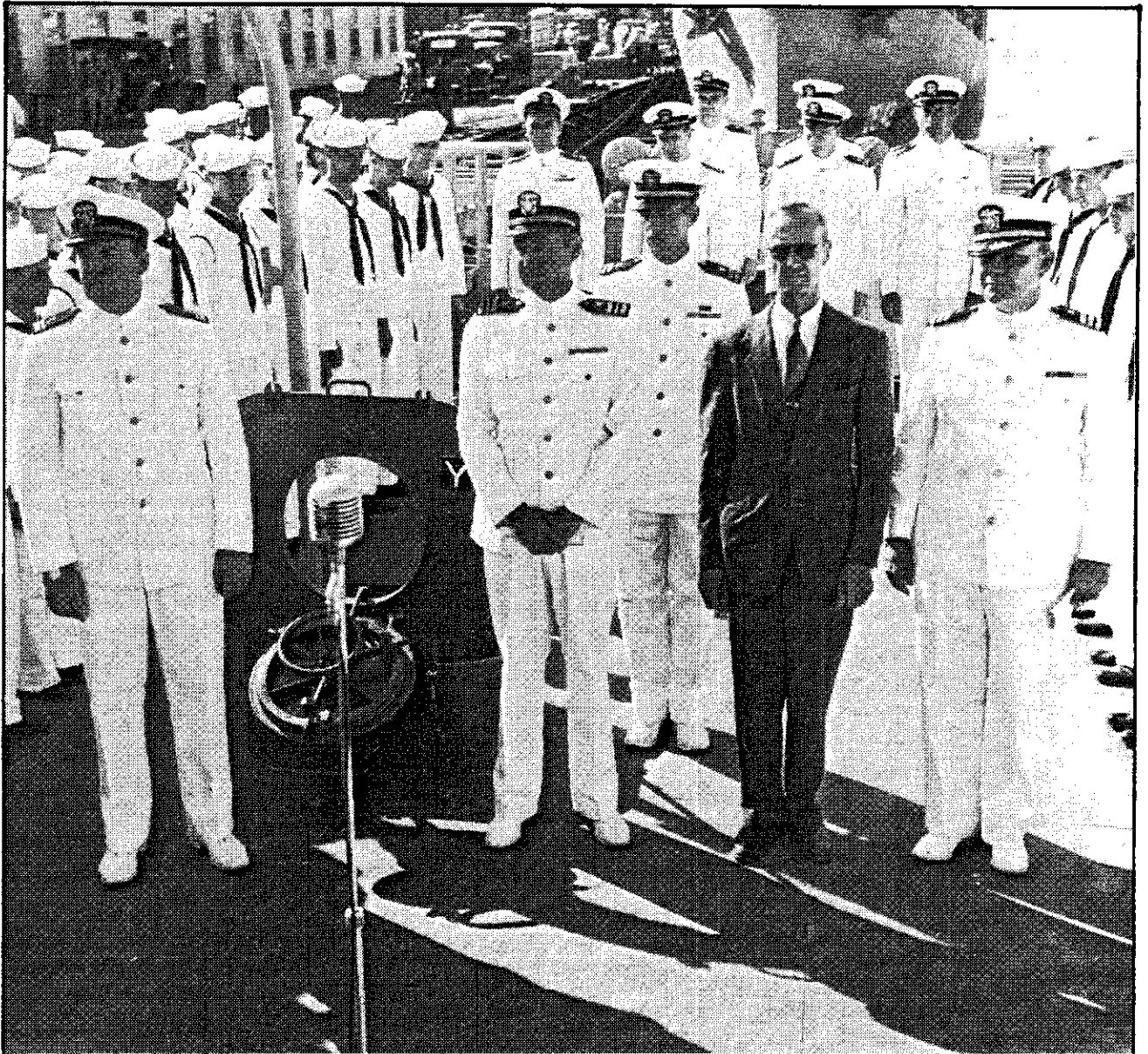




The destroyer escort USS Fiske (DE-143) was fully dressed for her launching at Orange, Texas, on 14 March 1943, with signal flags displayed from bow to stern over her mast and the colors at her masthead. Her keel had been laid down on 4 January 1943, and she was commissioned on 25 August 1943.

(Photograph courtesy of Robert R. White.)





Looking aft at the Fiske's commissioning ceremony held on the fantail at Orange, Texas, on August 25, 1943. The ship's first commanding officer, Lt. Comdr. Robert P. Walker, USN, is in the center. He was relieved by the officer behind him, Lieut. John A. Comly, USNR, on January 20, 1944. (Photograph courtesy of Robert R. White.)

